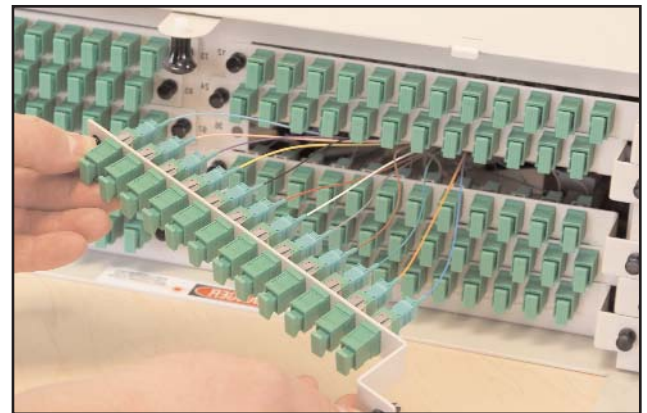


## Fiber Distribution System F23 144 port

The F23 Fiber Distribution System is ideal for the most demanding applications. The F23 144 port fiber distribution panel occupies only 6 inches of rack space in a 23" rack providing one of the highest port density patch panel configurations available. Rugged construction, scalable, high-density design, innovative cable management and easy fiber access make the F23 a great choice for high-volume fiber distribution.



- Provides 144 ports of fiber termination in a 6 inch 3.5 rack unit high footprint
- Connector types: LC, SC, ASC
- Support both singlemode and multimode fiber
- Integrated cable management designed to provide optimum protection for fiber
- Open design and non-angled connectors improve accessibility
- Available pre-loaded with factory terminated assemblies to ensure the highest quality termination possible as well saving time at frame installation
- Dual, vertical cable guides can support overhead or under-the-floor cable routing
- Modular construction makes future additions and upgrades easy and fast
- Dimensions (inches): 23 W x 6 H x 13.75 D
- Maximum 7 ft. frame capacity: 1728 off-frame splicing  
864 on-frame splicing



FLP-

4		G						0							
manufacturer	size/type	port count	connector/ adapter	tray options	terminated fiber	fiber type	color	exception							
APACN	4	23" Front Load (FL)	1	72 Port	E	None	0	None	0	PLEN, IFC	2	Putty	0	Default	00
		23" FL w/LCLP	2	96 Port	F	None	0	12 HSF	1	72 Port	E	PLEN, RIB	3	Equal Split IFC	01
		23" FL VCC	3	144 Port	G	SC, SM	1	24 HSF	A	96 Port	F	OSP	4	24 BKT & P. Load	02
		23" FL w/RCLP	4	288 Port	H	ST, SM	2	24 MASS	D	144 Port	G	Aarmor, OSP	5	CUS CBL	10
		23" RL	5	216 Port	J	FC, SM	3	72 MASS	E	288 Port	H	Riser, IFC	B	Split Adapters	12
		23" RL w/LCLP	6			LC DX, SM	4			216 Port	J	Riser, RIB	E	24" MNT BKT	20
		23" RL w/RCLP	8			MTRJ, MM	5					Riser, DERIB	H	No Front Bracket	03
		23" RL w/BCLP	9			STII+, SM	6					OSP Ribbon	R	Top Left	TL
		23" RL HORZ C/Bracket	A			ASC, SM	7					None	Z	Top Right	TR
		23" RL HORZ O/Bracket	B			AFC, SM	8							Bottom Left	BL
		23" FL w/BCLP	H			SC, MM	9							Bottom Right	BR
		23" P & S	J			ST, MM	A								
		26" FL HORZ C/Bracket	C			FC, MM	B								
		23" FL HORZ O/Bracket	D			SCDX	C								
		23" 288 Panel	M			ASCDX	D								
						ALC, SM	E								

**Notes**

FL	Front load	P/O	Patch & 2 OCM modules; includes clamps
RL	Rear load	VCC	Vertical clamping channel used
FT	Field terminate	HSF	Heat shrink fusion
W/RCLP	With right clamp	24" MNT	Mounting bracket; 24.5"
W/LCLP	With left clamp	BKT	
W/BCLP	With left & right clamp		
CUS CBL	Customer-supplied cable		
HORZ	Horizontal 12-pack		
O/Bracket	24.5" overall width Open bracket without door		
C/Bracket	26" overall width Closed bracket with door		
BLKHD	Accepts FAC ASM's		
MASS	Mass fusion splice (ribbon cable)		
BF	Bare fusion		
P & S	Patch & splice combination; includes clamps		

**Clamping Options**

TL	TR
Looking at the Rear of Panel	
BL	BR

**Example:**

Part Number: FLP-4HG10GE0-00 005M  
 Description: F23, Fiber optic patch panel, putty, 144 port panel loaded with (12) 12 fiber SC 5 meter riser rated ribbon pigtails, front load with both cable clamps, 26" mounting brackets

For options not listed, call APACN.



www.apacn.com