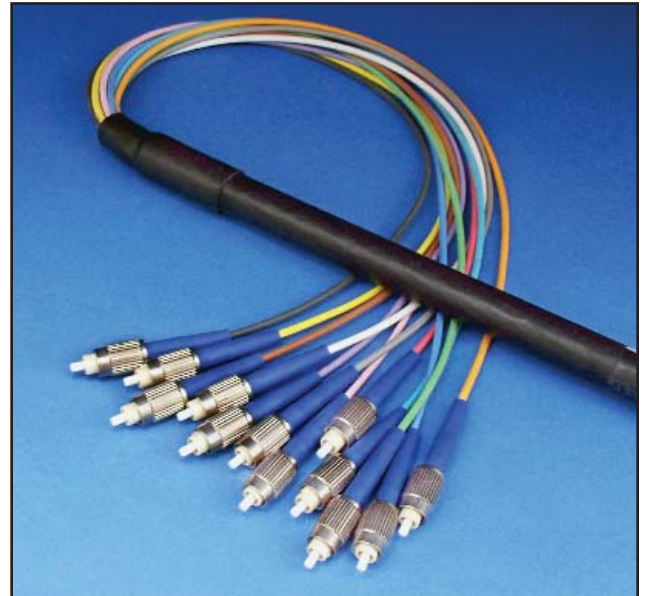


## Breakout Assemblies

Break-out cable is appropriate for low to mid-fiber count applications in demanding indoor environments. Common uses include manufacturing areas, unprotected communication closets, and small central offices.

- Extra rugged cable with individual compact components for each tight-buffered fiber
- Each jacketed sub-cable contains one tight-buffered fiber and aramid strength yarns
- Riser, plenum and fire retardant rated cable jacket available
- User-friendly with easily identifiable cable sub-units which are compatible with standard connectors
- Aramid strength member/jacket construction makes high-tensile strength terminations possible
- Versatile cable designs well suited for in-conduit, lashed aerial, direct burial, and indoor (riser and plenum versions) applications
- Fiber counts from 4 to 144





[www.apacn.com](http://www.apacn.com)

800.422.2537 • Phone: 763.476.6866 • Fax: 763.475.8457 • 5480 Nathan Lane, Plymouth, Minnesota USA 55442