

FieldSmart® Fiber Delivery Point (FDP)

144 Port PON in Pedestal Insert Kit/Vault Mount



Application

The FieldSmart Fiber Delivery Point (FDP) 144 Port PON Pedestal Insert Kit/Vault Mount provides splice or interconnect functionality, in industry standard Channell or Pencil pedestals and vaults, for drops to the home in the last mile of the access network. Additionally, it provides for a maximum capacity of 144 homes served, and is configured for PON environments.

Description

The FieldSmart FDP 144 Port PON Pedestal Insert Kit/Vault Mount provides for a drop cable scenarios in the access network with splicing and/or interconnect connectivity with a Clearview® optimized design. Accepting up to 13 Clearview Cassettes and five WaveSmart® High Density Splitters or WDMs, the insert will scale up to 144 homes served for PON applications.

Features and Benefits

Integrity

- RUS listed
- Terminations are designed, tested and certified to Telcordia GR-326
- Clearfield® FiberDeep® Guarantee: 0.2 dB insertion loss or less, exceeding industry standards
- Inserted into RUS pedestals
- Optical cable designed, tested and certified to Telcordia GR-20

Protection

- Clearview Cassette for physical fiber protection, bend-radius protection, access
- Buffer tube slack storage fully bend-radius protected
- Flood-proof non-metallic pedestals
- Can wrench accessible designs

Access

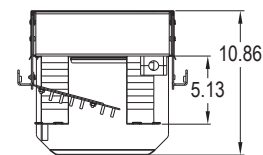
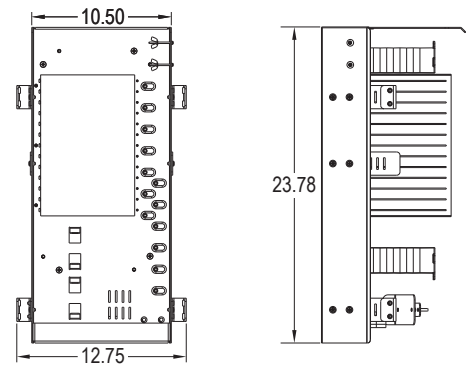
- Lift off flood-proof dome covers are non-metallic
- Clearview Cassette for quick access to terminations
- Cupboard style front and rear access-Metallic
- Split lid Pencil vault

Investment

- Low cost entry with RUS listed pedestals
- Scalable with Clearview Multiplied design for cost alignment to subscriber revenue
- Future proof with drop only to PON distributed migration
- Patch only or patch and splice configurations supported
- Flexible integration into a variety of RUS listed pedestals with simple bracket kits

Accessories

- WaveSmart High Density Splitter



Vault and Pedestal

V6A-ZZZ-03-P - 24 x 36 x 24" (609.60 mm x 914.40 mm x 609.60 mm) with 12" (304.80 mm) cut out for Pencil 12" (304.80 mm) pedestal (includes pedestal)

VXZ-ZZZ-02-P - Vault Only

FPP-121230-LG - Pedestal for vault

FieldSmart® Fiber Delivery Point (FDP)

144 Port PON in Pedestal Insert Kit/Vault Mount



Technical Specifications

FieldSmart Fiber Delivery Point 144 Port PON in Pedestal Insert Kit/Vault Mount	
Dimensions (for insert only)	23.78" H x 12.75" W x 10.86" D (604.01 mm x 328.85 mm x 275.84 mm) with brackets
Port Density	144
Feeder/Express Ports	12
Cassette Types Support	Clearview® Blue - Left Exit
Connector Types	SC/UPC, SC/APC, LC/UPC, LC/APC
Cable Types	Indoor/Outdoor, Outdoor (Riser/Non-Rated), Outdoor Armored (Riser/Non-Rated)
Splice Capacity	12 splices in each Clearview Cassette
Splitter Capacity	5 with High Density Splitter (KE series)
Material	14 gauge cold rolled steel with almond powder coating

Configured Part Numbers

Disclaimer/Note: Paper configurator shown is for reference only and should not be used to configure a saleable product configuration. All options shown on paper configurators may not be available or compatible with other options listed. Please contact your Clearfield representative for assistance in product configurations.

J - - - - - **A Z Z - B XXXXM or XXXXF**

1 2 3 4 5 6

1 144 Port Insert
 8 = PON, Patch and splice insert with non-metallic direct bury Pencil Pedestal, vault included
 9 = PON, Patch only insert with non-metallic direct bury Pencil Pedestal, vault included

2 Select Feeder Port Count
 A = No feeders
 B = 12 ports (1 cassette)
 Z = N/A

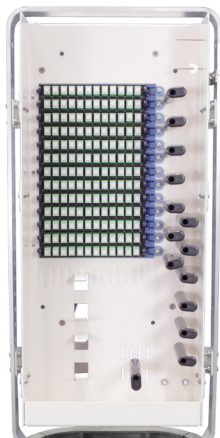
3 Select Distribution Port Count
 X X X = port count in increments of 12
 Z Z Z = N/A

4 Select Connector Style
 A = SC/UPC F = LC/UPC
 C = SC/APC H = LC/APC
 Z = N/A

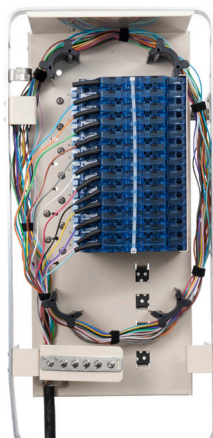
5 Select Mode / Type
 1 = Singlemode - non-ribbon
 2 = Singlemode - ribbon

6 Select Cable Construction
 B = OSP Riser
 E = OSP Non-Rated
 F = Patch and splice
 M = Armored OSP Non-Rated
 Z = N/A

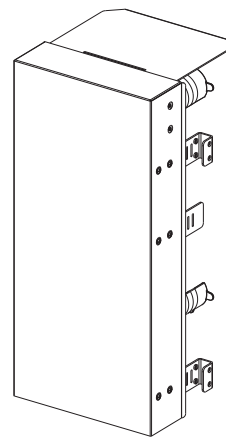
XXXXM or XXXXF
 XXXXM = Length of Pigtail in Meter
 XXXXF = Length of Pigtail in Feet



144 PON Insert - Front



144 PON Insert - Back



144 PON Insert with Cover