

FieldShield®

FLEXdrop Deploy Reel



Application

Due to the high variability of MDU architectures, extensive engineering has been required to ensure proper cable lengths for Fiber-to-the-Premise deployments. The 4.5" (114.30 mm) FieldShield FLEXdrop Deploy Reel minimizes pre-engineering because it allows FLEXdrop to be pulled from the reel directly to the access point. Once the pushable connector has reached its destination, the connector assembly is completed with the supplied connector housings and the connector is mated to the adapter. The remaining slack on the reel is pre-stored with no further slack management required. The terminated end on the reel is pre-tested, cleaned and mated in a Clearfield® factory environment, leaving the technician to simply mate the patch cord to the adapter on the reel. The small form factor of the cable assembly and Deploy Reel allows the FLEXdrop to be pulled and slack stored from the customer demarcation point. As an ISP Cable, FLEXdrop reduces pre-engineering and on-site installation time for MDU and riser deployments.



Description

The FieldShield FLEXdrop Deploy Reel is a 4.5" x 2.125" (114.30 mm x 54.02 mm) spool designed to hold up to 100 feet (30.48 mm) of FieldShield FLEXdrop. The FLEXdrop 3mm fiber makes slack storage minimal and easy to accommodate, while the exceptional pull strength of FLEXdrop makes it craft-friendly and easy for the technician to handle without fear of fiber damage.

Features and Benefits

Integrity

- FLEXdrop fiber cable designed, tested and certified to Telcordia GR-20
- Terminations are designed, tested and certified to Telcordia GR-326
- Supports singlemode SC connectors

Protection

- Deploying FLEXdrop with a FieldShield FLEXdrop Deploy Reel allows the installer to payout the exact amount of cable required and leave the remaining slack safely stored on the reel

Access

- Straight forward, simple design means installation crews spend less time figuring out how to deploy
- Available in 50 and 100 foot lengths

Investment

- Pre-terminated cable spools reduce upfront deployment costs by simplifying site survey inspections, reducing labor hours and streamlining cable deployment for SFU and MDU deployments

FieldShield®

FLEXdrop Deploy Reel



Technical Specifications

FieldShield FLEXdrop Deploy Reel	
Dimensions	5.8" W x 2.125" H (147.30 mm x 54.02 mm)
Material	Black Thermoplastic
Storage Temperature	-40°F to 150°F (-40°C to 65°C)
Pullable Connectors	FieldShield® SC/APC and SC/UPC
Standard Connectors	SC/APC, SC/UPC
Fiber	FieldShield FLEXdrop 3mm, black and white
Cable Length	50, 75 and 100 foot lengths (15.24 m and 30.48 m)

Pre-Configured Part Numbers

Pre-Configured Part Numbers

Part Number	Description
FDR-C1FA-DZZ2	FLEXdrop Deploy Reel, with SC/APC Adapter, Simplex SC/APC to Pushable SC/APC, Singlemode, 50 Feet, 3 mm FLEXdrop Patchcord
FDR-C1FA-DZZ4-R	FLEXdrop Deploy Reel, Opposite Spooling with SC/APC Adapter, Simplex SC/APC to Pushable SC/APC, Singlemode, 100 Feet, 3 mm FLEXdrop Patchcord



FieldShield®

FLEXdrop Deploy Reel With Extension Flanges



Technical Specifications

FieldShield FLEXdrop Deploy Reel	
Dimensions	5.8" W x 2.125" H (147.30 mm x 54.02 mm)
Material	Black Thermoplastic
Storage Temperature	-40°F to 150°F (-40°C to 65°C)
Pullable Connectors	FieldShield® SC/APC and SC/UPC
Standard Connectors	SC/APC, SC/UPC
Fiber	FieldShield FLEXdrop 3mm
Cable Length	100, 150 and 200' lengths (30.48 m, 45.72 m and 60.96 m)



Pre-Configured Part Numbers

Part Number	Description
FDR-C1FA-DZZ4-F	FLEXdrop Deploy Reel, with SC/APC Adapter, Simplex SC/APC to Pushable SC/APC, Singlemode, 100 Feet, 3 mm FLEXdrop Patchcord
FDR-C1FA-DZZ8-F	FLEXdrop Deploy Reel, with SC/APC Adapter, Simplex SC/APC to Pushable SC/APC, Singlemode, 200 Feet, 3 mm FLEXdrop Patchcord

Configured Part Numbers

FDR - 1 - Z Z

1
 2
 3
 4
 5
 6

1 Select Front Connector
 A = SC/UPC
 C = SC/APC

2 Select Jacket Construction
 F = FLEXdrop (Black)
 FW = FLEXdrop (White)

3 Select Port Count
 A = 1x1 in TAP

4 Select Rear Connector
 A = SC/UPC
 B = Pullable SC/UPC
 C = SC/APC
 D = Pullable SC/APC
 Z = None

5 Select Length
 2 = 50 ft.
 3 = 75 ft.
 4 = 100 ft.
 6 = 150 ft.
 8 = 200 ft.

6 Select Cable Deployment
 (Left Empty) = Standard
 -R = Opposite
 -F = Flange
 -RF = Opposite with Flange

FieldShield®

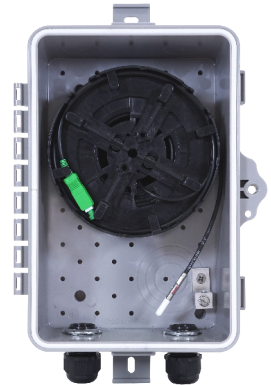
FLEXdrop Deploy Reel and Mini TAP Box



Description

The FieldSmart Mini TAP Box offers single or dual count fiber deployment in a discrete footprint and without sacrificing proper fiber management. The FieldSmart Mini TAP Box is designed to make FTTH more cost-effective and efficient than previously thought possible. Standardizing on a craft-friendly, building block architecture reduces the operating costs of fiber deployments by reducing installation times and inventory carrying requirements.

Technical Specifications



FieldSmart Mini TAP	
Dimensions	9" H x 6" W x 3.91" D (228mm x 152mm x 99.31mm)
Material	UV Stabilized, Flame Retardant Polymer (PVC)
Mounting Option	Two exterior mounting ears
Rating	NEMA 4, when combined with closure screws
Latching	Two snap locks to ensure lid seals to base with integrated seal
Security	Security screw with ability to secure padlock
Access	Two multi-purpose entry/exit strain reliefs. 5 lb. max. retention force with flat drop down to 3mm cable.
Storage	50 feet of 3 mm cable (from flat drop) and 100 feet of FLEXdrop on Deploy Reel

Pre-Configured Part Numbers

Part Number	Description
FDRG-CDSC-HHLZ	Deploy Reel Kit, Includes: Mini TAP Wall Box, StrongFiber Deploy Reel, Loaded with SC/APC Adapter and Simplex SC/APC to Pullable SC/APC 300 Feet, L-Bracket (No Adapter), Strain Relief
FDRG-CDF2-HHLZ	Deploy Reel Kit, Includes: Mini TAP Wall Box, FLEXdrop Deploy Reel, Loaded with SC/APC Adapter and Simplex SC/APC to Pullable SC/APC 50 Feet, L-Bracket (No Adapter), Strain Relief

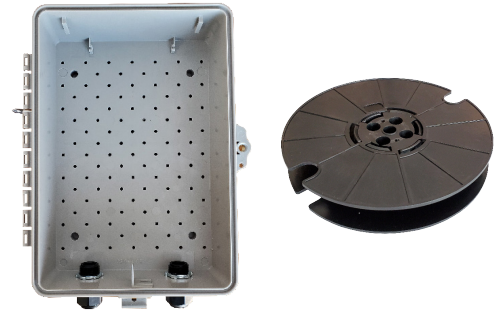
FieldShield®

FLEXdrop Deploy Reel and SCD TAP Box



Description

The lockable, NEMA-4 rated enclosure is compact with two bottom entry/exit points, making it ideal for a variety of applications. This enclosure can utilize the larger format FLEXdrop Deploy Reel with extension flanges for 100 and 200 feet applications.



Technical Specifications

FieldSmart SCD Wall Box	
Dimensions	12.17" H x 8.62" W x 3.91" D (309.12 mm x 218.95 mm x 99.31 mm)
Material	UV Stabilized, Flame Retardant Polymer (PVC)
Mounting Option	Two exterior mounting ears
Rating	NEMA 4, when combined with closure screws
Latching	Two snap locks to ensure lid seals to base with integrated seal
Security	Security screw with ability to secure padlock
Access	Two multi-purpose entry/exit strain reliefs. 5 lb. max. retention force with flat drop down to 3mm cable.
Storage	100 feet of 3 mm cable (from flat drop) and 200 feet of FLEXdrop on Deploy Reel



Pre-Configured Part Numbers

Part Number	Description
FDRB-CDF4-HHLZ-R	Deploy Reel Kit, Includes: Plastic NEMA 4 SCD TAP Box; FLEXdrop Deploy Reel Loaded with SC/APC Adapter and Simplex SC/APC to Pushable SC/APC 100 Feet (Opposite Spooling); L-Bracket (No Adapter); Strain Relief
FDRB-CDF8-HHLB-F	Deploy Reel Kit, Includes: Plastic NEMA 4 SCD TAP Box; FLEXdrop Deploy Reel Loaded with SC/APC Adapter and Simplex SC/APC to Pushable SC/APC 200 Feet; 1X 100 Feet Storage Spool; L-Bracket (No Adapter); Strain Relief

Configured Part Numbers

F D R

1 2 3 4 5 6 7 8 9 10

1 Select Box Style

B = FieldSmart SCD TAP Box
G = FieldSmart Mini TAP Box

2 Select Inside Connector

A = SC/UPC
C = SC/APC
E = LC/UPC
G = LC/APC

3 Select Take-Off

A = SC/UPC
B = Pullable SC/UPC
C = SC/APC
D = Pullable SC/APC
Z = None

4 Select Jacket

S = StrongFiber (Black)
F = FLEXdrop (Black)
FW = FLEXdrop (White)
Z = None

5 Select Length

2 = 50 ft. (FLEXdrop only) 6 = 150 ft. (FLEXdrop only)
3 = 75 ft. (FLEXdrop only) 8 = 200 ft.
4 = 100 ft. C = 300 ft. (StrongFiber only)

6 Select Left Exit/Entrance Port

G = Grommet
H = Strain Relief (Support FLATdrop, 10/6
Microduct, 3mm Jacket)
M = Adapter 3/4"
S = Sealcon (1/2" - 12.7/10 Microduct)
Z = None

7 Select Right Exit/Entrance Port

G = Grommet
H = Strain Relief (Support FLATdrop, 10/6
Microduct, 3mm Jacket)
M = Adapter 3/4"
S = Sealcon (1/2" - 12.7/10 Microduct)
Z = None

8 Select L-Bracket

A = SC/UPC
C = SC/APC
L = Empty
Z = None

9 Select Slack Spool

A = 1 x Storage Spool – 50 ft.
B = 1 x Storage Spool – 100 ft.
C = 2 x Storage Spool – 50 ft.
D = 2 x Storage Spool – 100 ft.
E = 1 x 50 ft. and 1 x 100 ft. Storage Spool
H = Mounting Plate
Z = None

10 Select Option

(Left empty) = Standard
-F = Flange
-FS = Flange with Splice Chip
-N = Narrow Spool
-NR = Narrow and Opposite
-NRF = Narrow, Opposite with Flange
-R = Opposite
-RS = Opposite with Splice Chip
-RF = Opposite with Flange
-RFS = Opposite with Flange and Splice Chip
-S = Splice Chip

Installation Video



Home Deployment Kit - 021311