

Copper

CAT5e and CAT6 Patch Cords



Application

Category 5e and 6 copper patch cords connect a variety of equipment interfaces in both carrier and private networks, as well as customer premise environments.

Description

These patch cords provide physical mated connections between components in 10BASE-T, 100BASE-T and 155 Mbps ATM networks. Clearfield® offers Category 5e and 6 copper patch cords with UTP cable and 8-conductor connectors manufactured to EIA/TIA standards.

Features and Benefits

Integrity

- Meets or exceeds EIA/TIA 568 B.2 MP 10/15/15
- RoHS and WEEE compliant
- ETL verified
- UL Listed
- 100% tested for continuity and performance

Protection

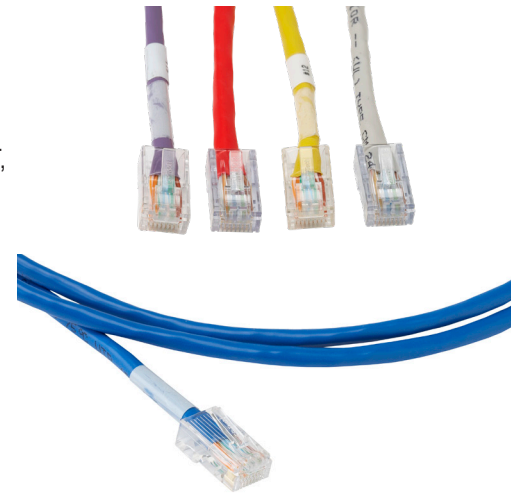
- Strain relief boots

Access

- Latch guards with easy thumb depression
- Nine stocked colors with custom configurations available

Investment

- Stock and custom serialization and labeling
- Stock and custom lengths available



Copper

CAT5e and CAT6 Patch Cords



Configured Part Numbers

CAT5e Patch Cords

C T 5 - - N T - XXXM or XXXF *

1 **2** **3** **4**

1 Select Cable Color

- 0 = Black (PVC)
- 1 = White (PVC)
- 2 = Purple (PVC)
- 4 = Red (PVC)
- 5 = Green (PVC)
- 6 = Blue (PVC)
- 7 = Gray (PVC)
- 8 = Orange (PVC)
- 9 = Yellow (PVC)
- A = Light gray (plenum)
- B = Dark gray (plenum)
- C = Black (plenum)
- D = White (plenum)
- E = Red (plenum)
- F = Yellow (plenum)
- G = Green (plenum)
- H = Blue (plenum)

2 3 Select Boot Colors

- 0 = Black
- 1 = White
- 2 = Purple
- 3 = Pink
- 4 = Red
- 5 = Green
- 6 = Blue
- 7 = Gray
- 8 = Orange
- 9 = Yellow
- N = No boot

4 Select Wiring Configuration

- 1 = 568A
- 3 = Crossover

XXXM or XXXF

XXXM = Length in meters
 XXXF = Length in feet

* Standard patchcords use stranded, non-shielded cable.

CAT6 Patch Cords

C T 6 - - N T - XXXM or XXXF *

1 **2** **3** **4**

1 Select Cable Color

- 0 = Black (PVC)
- 1 = White (PVC)
- 2 = Purple (PVC)
- 4 = Red (PVC)
- 5 = Green (PVC)
- 6 = Blue (PVC)
- 7 = Gray (PVC)
- 8 = Orange (PVC)
- 9 = Yellow (PVC)
- A = Black (plenum)
- B = White (plenum)
- E = Red (plenum)
- F = Green (plenum)
- G = Blue (plenum)
- H = Light gray (plenum)
- K = Yellow (plenum)

2 3 Select Boot Colors

- 0 = Black
- 1 = White
- 2 = Purple
- 3 = Pink
- 4 = Red
- 5 = Green
- 6 = Blue
- 7 = Gray
- 8 = Orange
- 9 = Yellow
- N = No boot

4 Select Wiring Configuration

- 1 = 568A
- 3 = 568A crossover
- B = 568A – certified cat 6
- D = 568A crossover – certified cat 6

XXXM or XXXF

XXXM = Length in meters
 XXXF = Length in feet

* Standard patchcords use stranded, non-shielded cable.